

# ~~3D LASER SCANNER~~ **LPX-1200**

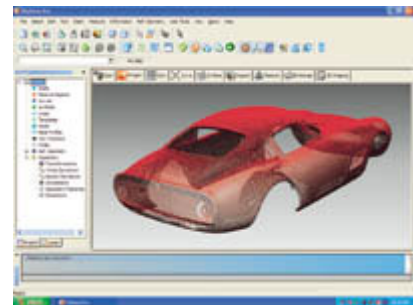


## Introduction

The LPX-1200 3D Laser Scanner quickly and accurately converts physical objects into 3D models. The LPX-1200 is a complete, user-friendly system and comes with scanner and reverse modeling software included.

## Features:

- Fast and accurate non-contact laser sensor
- Easy operation with Dr. PICZA3 operating software and USB connection
- Pixform Pro professional reverse modeling software included
- Supports robust polygon to NURB surface conversion
- Converts objects into 3D data at highly-accurate 0.1mm (0.0039") pitch
- Scans objects up to 130mm (5") in diameter and 203.2mm (8") high



## Specifications:

Model	LPX-1200
Table size	Diameter 130 mm (10in.)
Maximum scanning area	Plane scanning: Width 130 mm (5in.), height 203.2 mm (8in.) Rotary scanning: Diameter 130 mm (5in.), height 203.2 mm (8in.)
Scanning pitch	Plane scanning: width direction 0.1 to 130 mm, height direction 0.1 to 203.2mm Rotary scanning: circumference 0.18 to 3.6 degrees, height direction 0.1 to 203.2mm
Repeat accuracy	±0.05mm (This figure reflects standard scanning conditions established by Roland DG.)
Maximum table load weight	5kg
Interface	USB interface (compliant with Universal Serial Bus Specification established by Roland DG.)
Power supply	Dedicated AC adapter Input: AC 100 to 240V ±10% 50/60 Hz 1.0A Output: DC 19V, 2.1A
Power consumption	Approx. 20W (including AC adapter)
Dimensions	443 [W] X 396 [D] X 609 [H] mm (17-7/16 [W] X 15- 9/16 [D] X 24 [H] in.)
Weight	35kg
Environment	Temperature: 10 to 40 °C ( 50 to 104 °F) (25 °C[77 °F] or more recommended) Humidity: 35 to 80% (no condensation)
Included items	AC adapter, power cord, CD-ROM, clay, user's manual, Roland Pixform Pro

## System Requirements for the Software:

Software	Dr. PICZA and 3D Editor	Pixform Pro
Operating system	Windows XP/2000/Me/98	Windows XP/2000/Me/98/NT4.0 (SP6 or higher)
CPU	Pentium II or higher	Pentium or AMD Athlon
Memory	128MB or more	512MB or more (1GB or more is recommended)
Free hard-disk space required for installation	Dr. PICZA3: 20 MB or more 3D Editor: 10MB or more	800 MB or more (Additional 400MB for tutorial sample files)